

September Plans for full opening with Covid-19 restrictions.

In order to fully open we will be operating a year group bubble approach and minimising the amount of student movement for lessons not requiring specialist rooms. To facilitate this approach the school will be zoned into year group areas with dedicated facilities as follows:

Year 7

Will be located in the east end (Craven College side) of the Derwent Block and will have sole use of the toilets on the ground floor and first floor in that zone. The route to Derwent Block will be up between the ARC and White Block. Keep left on the path on the way up to Derwent Block. Give way to Y11 on the steps in front of Derwent Block and turn right and use the door at the Craven College end of the block to enter the zone. Year 7 will use the same door to exit the block and the same path back down to the main part of the school giving way to Y11 on the same steps. The main teaching rooms for non-specialist subjects will be:

Teaching Group (size)	Room	Sets
7BA (25)	D12	7x/Ma1
7KMC (28)	D13	7x/Ma2
7LAT (25)	D5	7y/Ma1
7JD (23)	D4	7y/Ma2

Entry to the site will be 8:35-8:40am using entry route 1.

Entry to their zone will be 8:45-8:50am.

Break will be in the court adjacent to Craven College with a break service from D6.

Period 4 for Y7 will be from 1:00pm to 1:30pm.

Students will move to Lunch at 12:20 (this maybe earlier initially whilst they get used to systems).

Exit from the site will be at 3.25pm using exit route 1.

Year 8

Will be located around the courtyard areas in rooms W3, W5 and C10 and will have sole use of the toilets by the gym area. The main teaching rooms for non-specialist subjects will be:

Teaching Group (size)	Room	Sets Maths	Sets English
8CMG (21)	W3	8x/Ma1	8x/En1
8JF (22)	C10	8x/Ma2	8x/En2
8VA (18)	W5	8x/Ma3	8x/En3

Entry to the site will be 8:40-8:45am using entry route 1.

Entry to their rooms will be from 8:50-8:55am and W3 will be accessed via fire door at the rear of White Block reached from the ARC side of the block. W5 will be accessed via the entrance under the flyover at the righthand side of the double doors and C10 direct from the courtyard opposite the PE changing rooms.

Period 4 for Y8 will be from 12:25 to 12:55pm.

Students will move to their social area at 12:55 and join the lunch queue at 1:10pm

Exit from the site will be at 3.35pm using exit route 1.

Year 9

Will be located around in the arts 'R' block and will have sole use of the toilets in that area. The main teaching rooms for non-specialist subjects will be:

Teaching Group (size)	Room	Sets Maths	Sets English	Sets Science
9 RW/TF (A)	R4	9x/Ma1	9x/En1	Bi – W8
9 BL (B)	R2	9x/Ma2	9x/En2	Ch – W7
				Ph – W6

Entry to the site will be 8:35-8:40am using entry route 2.

Entry to their rooms will be from 8:45-8:50am and will be accessed from the pathway at the side of the technology room and up the steps into R block.

Period 4 for Y9 will be from 12:25 to 12:50pm.

Students will move to lunch at 12:50pm

Exit from the site will be at 3.25pm using exit route 2.

Year 10

Will be located in the west end (Auction Mart side) of the Derwent Block and will have sole use of the toilets on the ground floor and first floor in that zone. The main teaching rooms for non-specialist subjects will be:

Teaching Group (size)	Room	English Sets	Maths Sets	Science	Opt. A	Opt. B	Opt. C	Opt. D
RG	D16	10x/En1	10x/Ma1	Bi-W8	Fr	Gy	Bb	Gy
HS	D10	10x/En2	10x/Ma3	Ch-W7	Hi	It-D11	Sb-D11	Hi
	D9	10x/En3	10x/Ma2	Ph-W6	Pf-DRS	Hs-SSL	Ar-W1	Sb-SSL
	D8				Sb-D11	Eg- R1		Hs-D11

Entry to the site will be 8:40-8:45am using entry route 2.

Entry to their rooms will be from 8:50-8:55am and will be accessed from conservatory entrance using the pathway passing the back of the sports hall and going around the outside of the walled garden.

Period 4 for Y10 will be from 12:25 to 12:55pm.

Students will move to lunch at 1:00pm, toilets need to be used first.

Exit from the site will be at 3.30pm using exit route 2.

Year 11

Will be located in the central section of the Derwent Block and will have sole use of the toilets outside the ARC and in the House Building. The main teaching rooms for non-specialist subjects will be:

Tutor Group (size)	Room	English Sets	Maths Sets	Science	Opt. A	Opt. B	Opt. C	Opt. D
ACJ	D3	11x/En2	11x/Ma2	Bi-W8	Gy	Gy	Eg-R1	Pf-DRS
NM	D7	11x/En3	11x/Ma3	Ch-W7	Hi	Hi	Hs-SSL	Sb
LM	D15	11x/En1	11x/Ma1	Ph-W6	Fr	Bb		Bb
	D11				Ar-W1	Sb	It	

Entry to the site will be 8:50-8:55am using entry route 1.

Entry to their zone will be 8:55-9:00am through the central doors of Derwent Block. The route to and from Derwent block will be around the outside of the walled garden turning right and then up the step in front of Derwent Block; Y11 will have right of way over Y7 on the steps.

Period 4 for Y11 will be from 1:00pm to 1:30pm.

Students will move to Lunch at 12:25 but will be held outside whilst Y7 clear the queue.

Exit from the site will be at 3.30pm using exit route 1.

Arrival Times / Breakfast Sittings

There will be 2 entry routes on to site:

- Route 1. Main path then up the left-hand side of the double stairs and into the first fire exit into the Main Hall
- Route 2. Enter through the car park entrance cross above the top courts up the right-hand side of the double stairs and into the second fire exit into the Main Hall

There will be 2 exit points out of the Main Hall

- 1. Main doors at the stage end
- 2. Fire exit at the servery end out by technology

	Year 7	Year 8	Year 9	Year 10	Year 11
08:35	Arrive on site Route 1	Not on site	Arrive on site Route 2	Not on site	Not on site
08:40	Queue/ Serve 1st Fire Exit	Arrive on site Route 1	Queue/ Serve Fire Exit	Arrive on site Route 2	
08:45	Eat Stage end (Main Exit)	Queue/ Serve 1st Fire Exit	Eat Servery End (Tech. Exit)	Queue/ Serve Fire Exit	
08:50	Ready to Learn Room	Eat Stage end (Main Exit)	Ready to Learn Room	Eat Servery End (Tech. Exit)	Arrive on site Route 1
08:55		Ready to Learn Room		Ready to Learn Room	Queue/ Serve Fire Exit
09:00		Ready to Learn Room		Ready to Learn Room	Eat Servery End (Tech. Exit)
09:05	Period 1	Period 1	Period 1	Period 1	Period 1

Year 11 will go straight to period 1 and receive their AM registration mark from their period 1 lesson mark.

Break sittings:

Break will occur each end of period 2 and staff will take their break at the same time as the year group that they are teaching period 2.

Entry for the stage end will be using the main doors into the hall. If they wish to use the outside area they will exit via the fire escape and use the right hand step to head down to the bottom court returning using the same route.

Entry for the servery end will be using the fire doors opposite technology into the hall. If they wish to use the outside area they will exit via the fire escape and use the left hand step to head down to the bottom court returning using the same route.

	Year 7	Year 8	Year 9	Year 10	Year 11
09:45	Period 1	Period 1	Period 1	Period 1	Period 1
10:05	Break D6 Derwent Court	Period 2	Break Servery End Top Court	Period 2	Break Stage End Bottom Court
10:25	Period 2		Period 2		Period 2
10:45		Period 2		Period 2	
11:05	Period 2	Break Servery End Top Court	Period 2	Break Stage End Bottom Court	Period 2
11:25		Period 3		Period 3	

Lunch Sitings:

Lunch food will all be served from the main servery but eaten in different ends of the main hall. If eating at the stage end the central doors opposite the pay point will be used to enter that eating zone.

Queueing for the servery will be from the fire exit keeping close to the wall.

	Year 7	Year 8	Year 9	Year 10	Year 11
12:20	Queue/ Serve (Main Doors)	Period 3	Period 3	Period 3	Period 3
12:25		Period 4 (1)	Period 4 (1)	Period 4 (1)	Social (Top Court)
12:30	Queue / Serve (Fire Exit)				
12:35					Eat Stage end (Main Exit)
12:40	Social (Derwent Court)	Social (Top Court)	Queue/ Serve (Main Doors)	Toilet Y10 zone	Toilet Y11 Zone
12:45			Eat Servery End (Tech. Exit)		
12:50	Period 4 (2)	Social (Top Court)	Eat Stage end (Main Exit)	Queue / Serve (Fire Exit)	Period 4 (2)
12:55			Queue / Serve (Fire Exit)	Social (Top Court)	
13:00		Eat Stage end (Main Exit)			
13:05			Social (Top Court)	Social (Bottom Court)	
13:10		Eat Stage end (Main Exit)			
13:15			Social (Top Court)	Social (Bottom Court)	
13:20	Eat Stage end (Main Exit)	Social (Bottom Court)			
13:25			Social (Top Court)	Social (Bottom Court)	
13:30	Period 5	Period 5			Period 5

Departure Times / Routes

There will be 2 exit routes from site:

- Route 1. Through the gate and gap between the Main Hall and the LRC then down the right-hand side of the double stairs and down the main path keeping right on the way out
- Route 2. Through the Main Hall and out of the fire exit by down the left-side of the double stairs and out through the carpark entrance crossing on the zebra crossing.

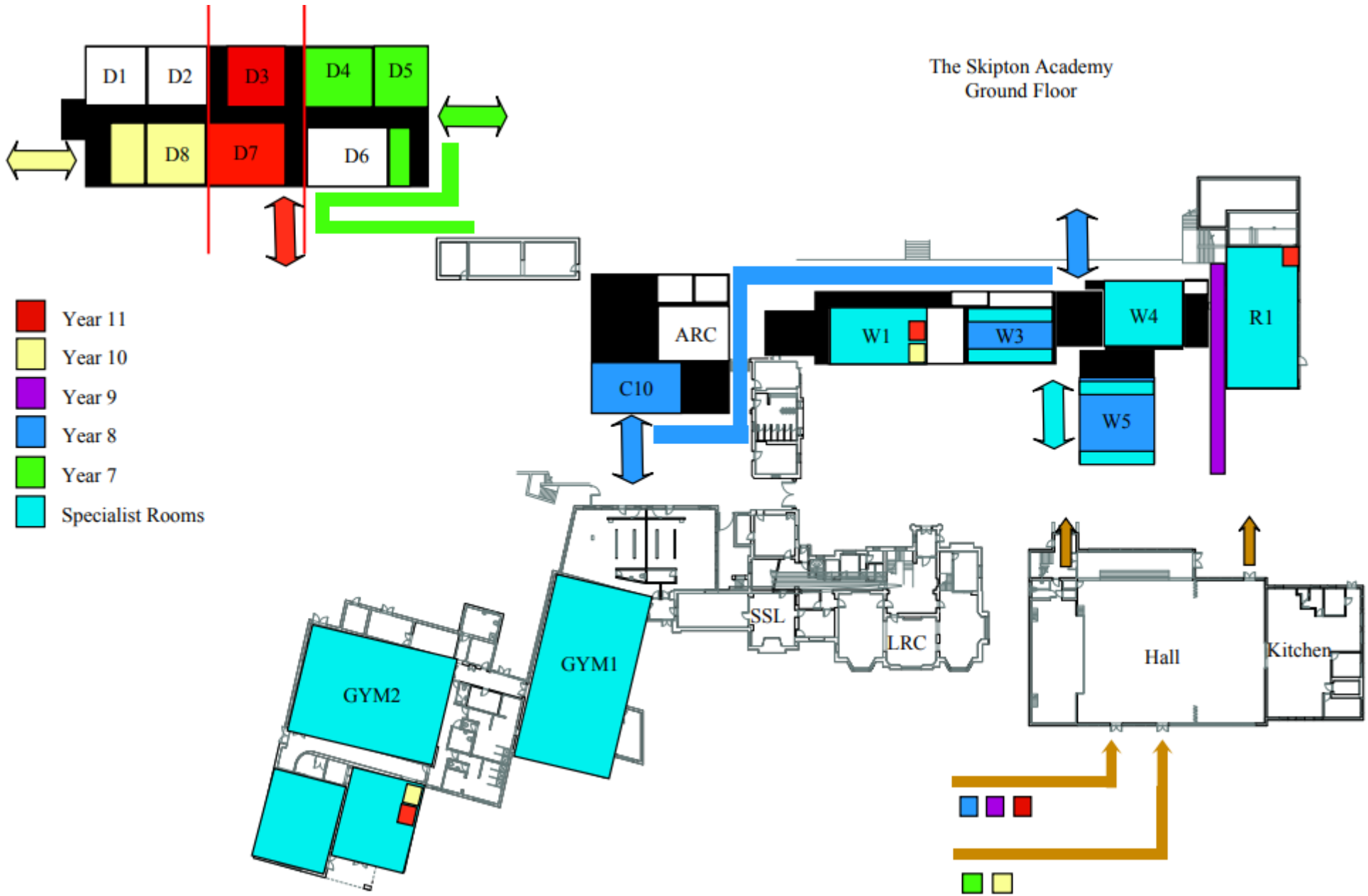
	Year 7	Year 8	Year 9	Year 10	Year 11
Dismissing Time	15:25	15:35	15:25	15:30	15:30
Route	1	1	2	2	1

All transitioning / moving around the school should be done keeping to the left in both indoor corridors and outside routes.

Specialist Rooms

Subject	Room	Route
Biology	W8	The top floor of science may be accessed using the flyover or from the back door of W8 from W9 area or from the back door of W6 from R4
Chemistry	W7	
Physics	W6	
KS3 Science	W3/5	Access is from the front or back of White depending on year group
Art	W1	Entry and exit to W1 is from the fire door at the back of White Block next to the bike store.
KS4 IT	D11	Y10 wait in the top floor of the Y10 zone to enter D11
KS3 IT	W9	Entry and exit to W9 is from the doors at the front of White Block under the clock on the wall of House Block.
Technology	R1/W4	Entry to W4 is sometimes from the rear door in science
Performance KS3	Dance (DAS)	Entry is via the fire exit at the far end of the corridor by the external gate to the football fields. Exit is down the corridor past the girls changing rooms to exit the doors by the gym.
Performance KS4/3	Drama (DRS)	
PE	Changing Rooms	Boys wait outside the changing room doors opposite C10 in the area marked for queuing. Girls wait outside entrance by gym until corridor clear to enter.
Sport BTEC	SSL	Y10 Wait in LRC via main entrance to be taken into the SSL

MAP:



The Skipton Academy
First Floor

